

Objectives and Sticky Knowledge

Previous Knowledge Recap:

- The main stages in a life cycle for animals, (including humans), are birth, growth, reproduction and death
- Exercise, a balanced diet and good hygiene are important for humans
- A nutritious, balanced diet is very important for humans
- Humans have parts of the body that can be seen
- Humans have a skeletal and muscular system, and internal organs including ones in our digestive system and different teeth

Land Objectives and Sticky Knowledge:

Changes as humans develop from birth to old age.

1. Prenatal – cells develop and grow into a foetus.
2. Infancy and childhood – rapid growth and development.
3. Adolescence – changes occur to enable reproduction – puberty.
4. Adulthood – from peak fitness and strength to changing ability to reproduce.

Know the process of reproduction in animals

1. Mammals use sexual reproduction to produce their offspring.
2. The male sex cell, called the sperm, fertilises the female sex cells.
3. The fertilised cell divides into different cells and will form a baby with a beating heart.
4. The baby will grow inside the female until the end of the gestation period when the baby is born.

Links with ‘Sustainability’ Golden Thread:

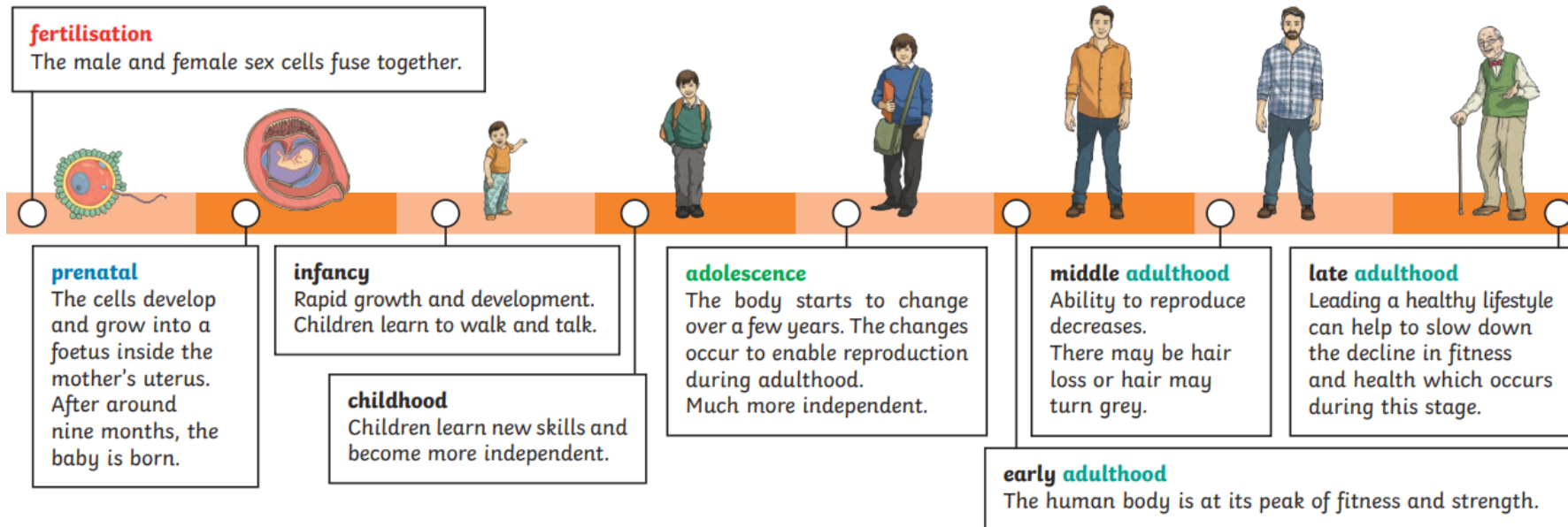
Links with CST and CKA Values Crown:

Year 5 Animals Including Humans Knowledge Organiser



Key Vocabulary

Fertilisation	The process of the male and female sex cells fusing together.
prenatal	The stage of development from the time of fertilisation to the time of birth.
gestation	The process or time when prenatal development takes place before birth.
reproduce	To produce young.
asexual reproduction	A process where one parent produces new life.
sexual reproduction	A process where two parents – one male and one female – are required to produce new life.
life cycle	The changes a living thing goes through, including reproduction.
adolescence	The social and emotional stage of development between childhood and adulthood.
puberty	The physical stage of development between childhood and adulthood.
menstruation	When the female body discharges the lining of the uterus. This happens approximately once a month.
adulthood	The stage of development when a human is fully grown and mature.
life expectancy	The length of time, on average, that a particular animal is expected to live.



Sky Objectives:

- Use a range of enquiries to answer a broad range of scientific-based questions.
- Carefully observe and accurately measure variables during an investigation.
- Use a combination of observations and data to draw conclusions that either support or refute the grounds of an investigation.