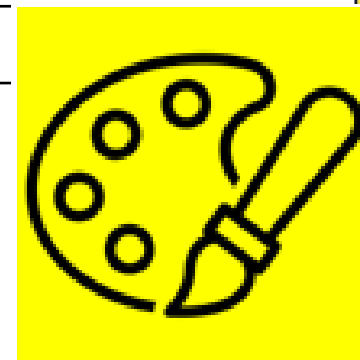




Objectives and Sticky Knowledge



Previous Knowledge Recap:

Different leads create different thicknesses of line.
 Continuous lines can be drawn to create objects and images.
 3 dimensional drawings use shading to make an object appear not to be flat.
 Different shades of the same colour can be used to make an object appear 3D.

Land Objectives and Sticky Knowledge:

To demonstrate one-point perspective

1. I can identify that the vanishing point of a piece of art is where all the lines of perspective will eventually meet at one point.
2. I can use a ruler to enlarge objects by extending corner to corner parts of shapes.
3. To use shading to add depth to perspective drawings.

To be able to print more complex designs with lino printing (layering colours).

1. Design a symmetrical design.
2. Use cutting tools with accuracy.
3. Use different types of blade to create different effects.

Sea:

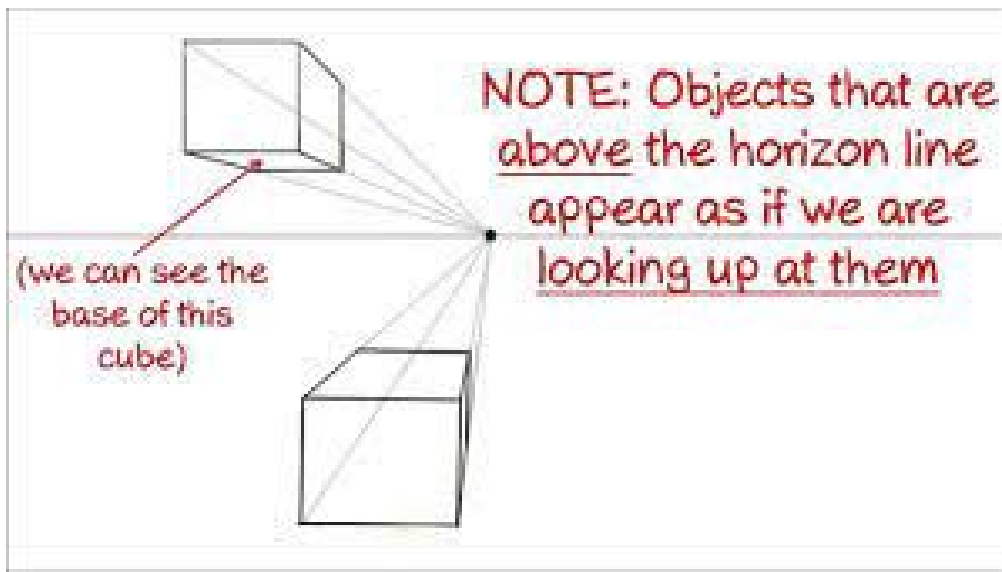
Links with 'Communication':

Links with CST and CKA Values Crown:

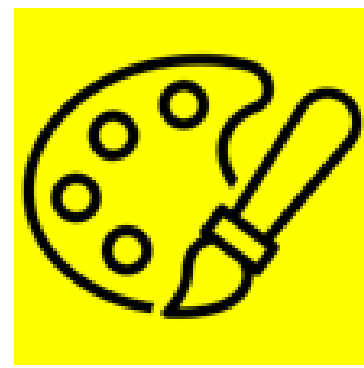
Year 5 Art Advent 2 Knowledge Organiser

Key Vocabulary

perspective	a method of creating the illusion of depth by means of converging lines.
print	to transfer a mark or image from one material to another. In most cases, it makes it possible to reproduce a mark or image more than once.
shading	technique used in art to represent light and shade by varying the colour and intensity
symmetrical	when a shape or object has two matching halves.
vanishing point	where all the lines of perspective will eventually meet at one point



Lino Printing



1. Draw out your design onto the lino tile. *Think carefully about which parts of the design you will cut out.*



2. Using the lino cutting tools carefully cut away your design. *Be careful to not cut all the way through the lino and make holes.*

3. Brush off all the loose bits of lino. *Its important to make sure the lino is clean and free from bits that will get caught in the ink!*



4. Squeeze a little ink on to the palette. You do not need much! Roll the Brayer in the ink until it is covered. *Try to get the ink on to the roller as evenly as possible.*

5. Apply the ink on to your lino tile with the Brayer. *Keep the roller flat. Make sure the ink is evenly applied to the lino tile. Do not apply too much ink otherwise it will go into the cut away sections and ruin the quality of your print.*



Sky Objectives:

1. To complete line drawings using a range of drawing materials including shading and to be able to demonstrate a one-point perspective.
2. To make a three-part colour wheel showing primary secondary and tertiary colours.
3. To create 3D clay sculptures and to use tools to create hollows and holes and scratch detail/texture.