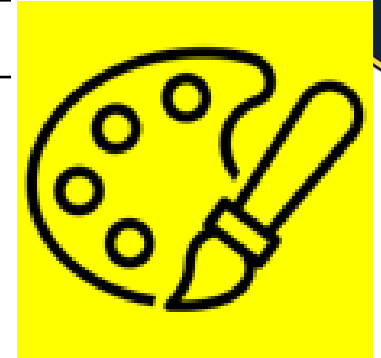




Objectives and Sticky Knowledge



Previous Knowledge Recap:

I know that adding white to a colour lightens the shade.

I know that mixing two primary colours creates a secondary colour.

I know that mixing two secondary colours creates a tertiary colour.

Land Objectives and Sticky Knowledge:

To experiment with using acrylics on canvas and a range of different techniques.

1. Water and paint create a diluted wash.
2. Stippling involves creating an assembly of random tiny dotted colours and scattered brush marks using the bristle ends of the brush.
3. Dabbing is a good technique for adding textures and movements to artwork by using a sponge or hard bristle brush to press on undiluted acrylic paint and pounce them onto the canvas. Apply multiple layers to build depth, working from dark to light.

Sea:

Links with 'Sustainability and Stewardship'

Links with CST and CKA Values Crown:

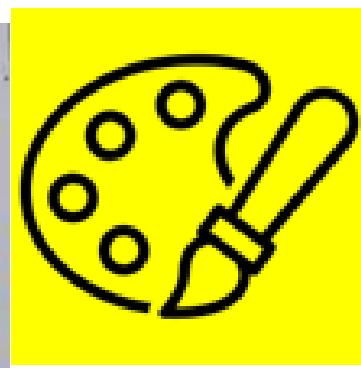
Year 5 Art Advent 2 Knowledge Organiser

Key Vocabulary

stippling	An assembly of random tiny dotted colours and scattered brush marks using the bristle ends of the brush.
acrylic	A kind of plastic used to make yarns, paint, and many other things.
shading	technique used in art to represent light and shade by varying the colour and intensity
dabbing	Using a sponge or hard bristle brush to press on undiluted acrylic paint and pounce them onto the canvas.

Sky Objectives:

1. To complete line drawings using a range of drawing materials including shading and to be able to demonstrate a one-point perspective.
2. To make a three-part colour wheel showing primary secondary and tertiary colours.
3. To create 3D clay sculptures and to use tools to create hollows and holes and scratch detail/texture.



This is when you apply a thin layer of diluted paint over the colors already applied. The thin veil of color allows the colors underneath to still shine through.



This stroke is used when you are adding texture. You can apply dabbing if you want to create bushes or texture seen on the ground.