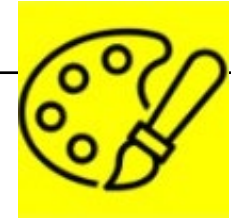




Objectives and Sticky Knowledge



Previous Knowledge Recap:

Know how to show how people feel in paintings and drawings.
 Know how to use pencils to create lines of different thickness in drawings.

Land Objectives and Sticky Knowledge:

<p>Choose and use three different grades of pencil when drawing.</p>	<p>Know how to use charcoal, pencil and pastel to create art.</p>
<p>I know that 'tone' means the lightness or darkness of something I can experiment with 3 different grades of pencil to create different tones when drawing I can control my pencil to create dark and light tones</p>	<p>I can use different tones to make a drawing look three dimensional I know that I must take care to shade with no gaps I know that I must not to go over the lines I must rub out any small mistakes I can use charcoal, pencil and pastel; holding them in different ways to give a variety of tones from light to dark use a viewfinder to focus on a specific part of an artefact before drawing it.</p>

Links with 'Sustainability and Stewardship' Golden Thread:

Use of reused/recycled items when drawing

Links with CST and CKA Values Crown:

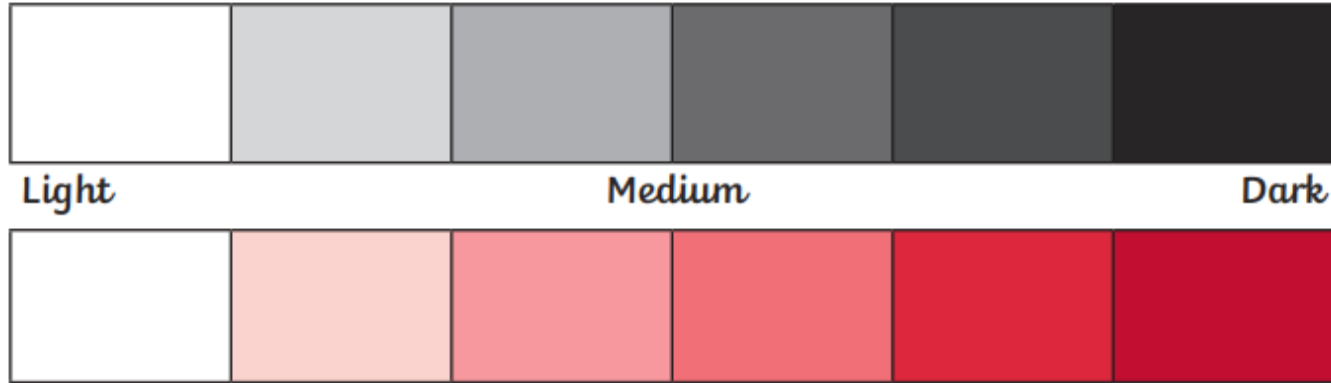
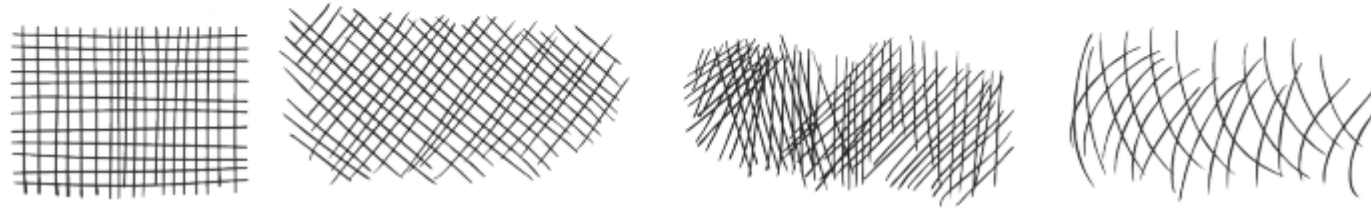




Key Vocabulary

- pencil
- charcoal
- pastel
- shade
- tone
- artist
- three dimensional
- cross-hatching

Cross-hatching means using lines going one way, then adding lines on top, going the other way (crisscrossing over the top). Try using the cross-hatch technique on these mugs. You can even add a third or fourth set of lines to make the shading darker.



What is tone?

In art, tone refers to the areas of **lightness** and **darkness** on an object or colour. How we view tones depends on the surface of the object. Colour tone is created by adding different amounts of white or light colours for light tones, or gradually adding different amounts of black, grey or dark colours for darker shades.

Sky Objectives:

To complete line drawings using different drawing materials and to demonstrate smudging and hatching.