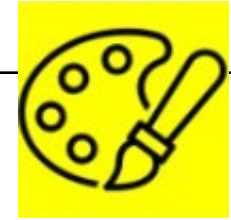




Objectives and Sticky Knowledge



Previous Knowledge Recap:

- To know the name of the primary colours: red, blue and yellow
- To know that we mix two primary colours together to make a secondary colour
- To know the name of the secondary colours: orange, purple, green

Land Objectives and Sticky Knowledge:

<p><b>Know how to mix paint to create all the secondary colours</b></p>	<p><b>Know how to create brown with paint</b></p>	<p><b>Know how to create tints with paint by adding white and know how to create tones with paint by adding grey.</b></p>
<ul style="list-style-type: none"> <li>• Know how to hold a paintbrush and how to paint smooth strokes with the brush</li> <li>• Know how to care for the painting tools during the prep, whilst using and after use.</li> <li>• Mix two primary colours together to investigate what secondary colours can be created.</li> <li>• Understand that only a small amount of a darker colour is needed when mixing</li> <li>• Create a colour wheel showing all the primary and secondary colours</li> </ul>	<ul style="list-style-type: none"> <li>• Mix three primary colours together to make brown</li> <li>• Paint pictures using only the primary colours to mix the different paint palettes needed.</li> </ul>	<ul style="list-style-type: none"> <li>• Add white to a primary colour to make different tints.</li> <li>• Add grey to a primary colour to make different tones.</li> </ul>

Links with 'Communication' Golden Thread:

How people use art to communicate their feelings – pick up on which colours represent which feelings (Link to PHSE and Year 1 retrieval)

Links with CST and CKA Values Crown:





## Key Vocabulary

primary

secondary

tint

shade

tone

artist

bold

vivid

cool

warm



## Primary Colours

These three colours cannot be made by mixing other colours. These are called primary colours.



## Secondary Colours

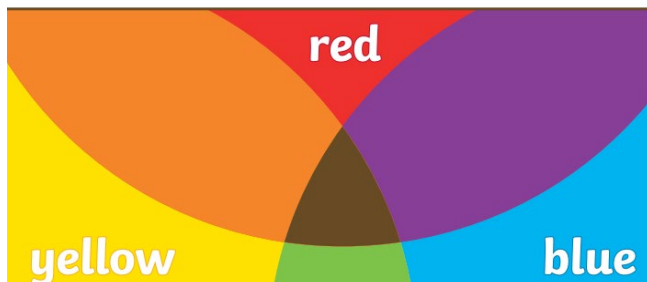
These three colours are made by mixing together two primary colours. These are called secondary colours .

A **tint** is where an artist adds a colour to white to create a lighter version of the colour. An example of a tint is pink. Pink is a tint created by adding white to red.

A **shade** is where an artist adds black to a colour to darken it down.

A **tone** is where an artist adds grey to a colour.

How to Make Brown



## Sky Objectives:

To make a two-part colour wheel showing primary and secondary colours.